



LAND WATCH
Australia



Contents Page

01	FOREWORD
02	CROPPING
03	LIVESTOCK
04	DAIRIES
05	FEEDLOTS
06	NATIONAL PARKS
07	FULL PROPERTY SOLUTIONS
08	LAND WATCH WIRELESS LINKS
09	WHAT A LAND WATCH SYSTEM INCLUDES
10	OUTBACK WI-FI
11	4G SELF-INSTALL SYSTEMS
12	STARLINK BASE STATION
13	PARTNERSHIPS
14	TESTIMONIALS
15	CONTACT US

Information contained throughout this publication is believed to be accurate and reliable at the time of publishing. From time to time there may be information on our website or in our catalogue that contains typographical errors, inaccuracies, misprints, human errors, and omissions that may relate to product descriptions. Land Watch reserves the right to make changes and corrections in prices, products, and specification/s without notice and to change or update information at any time without prior notice.

Simply put, Land Watch provides camera systems that allow farmers to remotely monitor their properties, sheds or livestock.

FROM FEEDLOTS TO ORCHARDS....

Right up top in the Kimberley to way down in the cold wet hills of Phillip Island, or over on the windy east coast of New Zealand. It didn't matter so much where I travelled to this year, with each cuppa shared and story told there was a clear concern about rural crime.

The dodgy characters I heard about had different interests around the map. Across the top end its arson and killers, in the southern high country sheep theft is running rampant and crop vandalism is still affecting the Riverina. All areas are experiencing fuel theft like never before, and it seems like you need to chain the Land Cruiser Ute to the shed floor to keep it from being pinched.

On top of the security concerns is the worker shortage, combine that with the ludicrous price of diesel and it's getting really hard to keep an eye on all the areas you would like to. As history teaches us, these issues can be solved, or at least helped with advancements in technology; but it needs to be gear that is built for the task.

Protecting a farming property from theft or getting a live view of a remote tank, takes a custom approach. There is no one size fits all. That's why this isn't a catalogue where you can just pick a dairy farm security system or a grazing property trough camera set up. I am yet to see two properties that are the same and have definitely not seen two identical Land Watch solutions.

In these pages, it's all about helping you figure out what your place needs. You will read about a couple of producers and how remote cameras are keeping an eye on things for them. I reckon once you see how some of these guys use the cameras, you will be able to picture how you might too. Chances are your place will need a mix of different solutions.

As you read through, consider what you want to achieve by using cameras across the place. Like the peace of mind that you know for sure, no one has crossed the grid while your away, or that there 100% definitely is water in that tank, because you can see it.

Don't worry about connectivity just yet. First things first, we need to go back to the basics and work out what we are keeping an eye on and why. Then we can work out how we do it, there is no property too big and no camera too remote to have a live view from anywhere in the world.

So, grab a cold one, make yourself comfy, and let's dive into the world of rural security and monitoring. Because when it comes to keeping an eye on what's important, it needs to be done right.

Happy browsing, and here's to keeping our corner of the world safe and sound.

- JOHN HILL
CO-FOUNDER AND CHIEF STORYTELLER

02

BROADACRE

The trouble with broadacre properties is that they are mostly unfenced and with numerous access points around the place, which for the operation of a cotton or grain growing property is essential, but for property security is not ideal. The key philosophy of deterrence, remains top priority. So it's important to cover the main entrances plus as many other entrances as you can, particularly off main roads and the furthest away. We want the cameras to be prominent to everyone driving past, as the aim is for everyone in the area to know this place is covered.

Cameras across the machinery sheds should be included to protect from equipment tampering. It's pretty rare for a header to go walkabout (but not unheard of) and more common for the batteries/wiring to be stripped. Given the volume of fuel on site and the frequency of users topping up machinery, 24/7 cameras on the fuel are essential if you want to know where it all went.

Other placements for consideration are weighbridges and silos for security and a record of grain movement as well as water channels and pivots from an irrigation management point of view.

KOوبا STATION - DARLINGTON POINT, NSW

Comprising around 36,000 hectares with 7,000 hectares of cotton plus perennial plantings and livestock rotating with wheat, and barley, is Kooba Station in the Riverina area of NSW.

With such a large spread property and high chance of theft/trespassing, water and operations manager Simon Lok started thinking more seriously about the security needs for the station. Simon was on the lookout for "a company that could handle security on a large-scale, agriculturally speaking".

Following a detailed design process, a custom Land Watch solution was implemented to cover all entry points with number plate recognition cameras. Additional cameras monitor assets and water.

Using existing silo and tower structures, we were able to take the already existing internet connection from the office and spread it out to all areas where it was needed plus link the cameras back to the office.

Kooba Station is now fully equipped with 24/7 live stream to entry points, sheds, paddocks, and pump stations, viewable from the office with recording and remote access.

"God forbid something happens we can go in the next morning pull up the cameras and go through license plates, and feeds at certain times. It's very handy." - Simon Lok, Water and Operations Manager, Kooba Station.



HOW LAND WATCH CAMERAS ARE USED ON BROADACRE PROPERTIES

DARLINGTON POINT, NSW

An ANPR (auto number plate recognition) camera captures plate digits. These are always paired with a wider view camera to get a broader view of the vehicle.

ANPR CAMERA



CONDOBOLIN, NSW

Security cameras monitoring across the main driveway and loading area with vehicle/human detection.

ZOOM CAMERA



GATTON, QLD

Full time security camera coverage over the equipment as well as capturing movement throughout the compound.

FIXED CAMERA



BROOKSTEAD, QLD

Inside of the shed camera view doubles as a security camera and OH&S record. If someone flogs the tractor or gets run over by it, you will have footage of it.

FIXED CAMERA



03

LIVESTOCK

Generally, a livestock operation has less accesses than a cropping property and is protected by a boundary fence, making it easier to monitor vehicles accessing the property. Then again, some of the most valuable assets are out roaming around the paddock.

To protect the gear at the main shed complex, we will start with an ANPR camera at the main grid with secondary cameras around the sheds, fuel and yards.

For stock theft prevention and capture, the aim is to monitor the roads and intersections. The main entrances should be covered as a minimum, but a pair of pliers quickly makes a new entrance, so for this reason, all entry cameras should double as road monitoring cameras and all main road frontages should be monitored. Should a vehicle pass one camera and not the next in the expected timeframe, it can be assumed they have stopped in between. Maybe they got a flat tire, or maybe they liked the look of a couple of ewes.

REDHILL - COOLAC, NSW

Andy Graham, a fifth-generation Merino sheep and Angus cattle farmer near Coolac NSW, was struggling with stock theft and trespassing on his family property.

The issue was the main road that ran straight through the middle of the place, which provides great access for workers but an unwelcome entry to strangers.

With black spots over most of the farm and the undulating topography of the land, it made it hard to find a connected solution. Until we introduced Andy to the Land Watch Links.

The cameras now cover all main entrances, road frontages and intersections, ensuring all vehicle movement can be reviewed.

With long distance Land Watch Links and repeater stations across the steep hilly country, all footage is securely stored away from the cameras. At the same time, each of the camera stations now doubles as a Wi-Fi access point.

“With Land Watch, it allowed us to transfer Wi-Fi to intensive areas of the stockyard. It not only gives us peace of mind of the security, but also occupational health and safety. We told them what we wanted, and they knew what they could do straight away.” - Andy Graham.



HOW LAND WATCH CAMERAS ARE USED ON LIVESTOCK PROPERTIES

WANDOAN, QLD

An ANPR camera is essential at a grid where vehicles are often moving quickly.

ANPR CAMERA



TAROOM, QLD

Security camera on the loading ramp to monitor cattle truck deliveries and pick up. Vehicle alert notifications.

ZOOM CAMERA



COOLAC, NSW

Security camera covering remote sheep yards. This system also included a Wi-Fi access point for remote connectivity.

FIXED CAMERA



SPRINGSURE, QLD

Full time coverage of the fuel tanks to keep track of fuel usage.

ZOOM CAMERA



04 **DAIRIES**

Whilst similar in many ways to monitoring any livestock property, a dairy also requires increased coverage around the cattle handling areas. Typically, a dairy will have a higher level of employee and contractor traffic in and out each day, plus the continual movement of tankers and feed deliveries.

For this reason, ANPR cameras on the main roads are essential with extra coverage over the fuel and vats for recording purposes. You need to know the vehicles that are using the fuel or taking the milk.

Aside from keeping an eye on the place for security, many dairy farms will also utilise additional cameras to allow further remote monitoring. This may include a portable camera unit to cover calving paddocks from a welfare point of view as well as cameras on the yard areas and lane for stock management and animal welfare.

WATKINS FARM - TIRAU, NZ

Initially cameras were employed across the Watkins family farm out of necessity. Fuel was being used faster than expected but with the high volume of workers, contractors and trucks coming and going it was near on impossible to pinpoint where it was being used.

What started as one camera on the fuel to catch an employee helping themselves, turned into a full property roll out with all fuel, milk tanks and work areas covered.

“Once we saw the effectiveness of the cameras in answering our questions about the fuel we just started thinking, where else across the properties, do we wish we could see when we are not there.”
– Michael Watkins.

Consolidating internet plans from 5 down to 1 across the multiple dairies, sheds and houses helped make the numbers stack up on the project even more. Now all cameras and Wi-Fi for business use are run from just one internet subscription and with no ongoing cost for the cameras.



HOW LAND WATCH CAMERAS ARE USED ON DAIRY PROPERTIES

KYOGLE, NSW

PTZ camera to check on calving paddock and water troughs.

PTZ CAMERA



TIRAU, NZ

Camera over milking area for animal welfare and staff OH&S.

FIXED CAMERA



TIRAU, NZ

Night vision of feed pad for remote stock monitoring.

PTZ CAMERA



ORANGE, NSW

Camera mounted on a shed capturing vehicle movement and a broader view to the dairy.

ZOOM CAMERA



05

FEEDLOTS

Vehicles are always coming and going on a feedlot making it sometimes hard to work out who is meant to be there and what that last truck was doing there. Again, as in most instances we recommend the number plate camera on the main entrances. Machinery and equipment are generally stored relatively close to the office making it cost effective to cover the main sheds and equipment with cameras.

Using cameras to monitor animal welfare is increasingly popular across feedlots, as well as piggeries and poultry farms. We know that the vast majority of operators take better care of their stock than city folk do their pets; with cameras, you can prove it.

With places that have intensive work areas, it can be useful to provide cameras for workplace health and safety. Having a camera on the crush or loading ramp and around the key working areas, means that if an injury or an incident occurs you can have a record. It's not about watching the workers to make sure they aren't slacking off, it is about protecting them. If someone gets kicked or pinned you want to be able to know how it happened.

BARMOUNT FEEDLOT - MARLBOROUGH, QLD

110 km northwest of Marlborough, lies Barmount Feedlot, a 7,500 hectare family owned and operated beef/cattle feedlot with over 40 years custom feeding experience.

Between 10-25 staff occupy the feedlot all year-round including admin, caretakers, and farm hands. Barmount also has a variety of external contractors, agronomists, nutritionists, and veterinarians, meaning there are a lot of vehicles, trucks, and people coming and going on a daily basis.

With this in mind, it was decided that installing cameras was something that needed to be done, not only for further security of the property but also for the safety of the workers.

Most importantly, a camera was installed on the cattle crush to monitor staff safety and also cattle loading and unloading. With such a volume of cattle moving, a video record of the loading ramp might come in very handy one day.

An ANPR (Automatic Number Plate Recognition) camera placed at the front entry of the property monitors every truck coming in and out carrying grain and cattle with an alert for relevant staff.

“If a workplace health and safety incident were to occur, we have 24/7 recording available that we can go back and review. The Land Watch systems are a great solution to help us in our business long term.”

- Andrew Conaghan.



HOW LAND WATCH CAMERAS ARE USED ON FEEDLOTS

MARLBOROUGH, QLD

Weighbridge camera for record keeping.

ANPR CAMERA



MARLBOROUGH, QLD

Yards and loading ramp for security and OH&S.

FIXED CAMERA



LOTUS CREEK, QLD

Remote monitoring of river pump as well as Wi-Fi for remote control.

FIXED CAMERA



SPRINGSURE, QLD

Chemical shed and fuel security camera mounted on silo.

FIXED CAMERA



06

NATIONAL PARKS

There are some assets that you just can't put a value on, like things of cultural or environmental significance. In this regard, obtaining footage of thieves and vandals is important but deterrence is of absolute priority. Machinery and even stock on agricultural properties can be replaced and are often covered by insurance, but old growth forests, prehistoric fossils or remnants of pre settlement cultures are one of a kind. We only have one shot at protecting these areas, once damaged or stolen they are often gone for good.

Depending on the situation, live monitoring can be a useful option or simply having a prominent system where it is not expected, for example at the entrance to the park or camping area. In all cases, due to the often remote and secluded position with easy public access, it is imperative to have off camera recording.

Unfortunately, some of these areas are targeted by organised crime. Yes, even in Australia there is a black market for artefacts, so we step it up a notch when protecting these areas. Additional backups and fail safes are implemented such as additional storage and back up power supplies.

NILPENA EDIACARA NATIONAL PARK, SA

Out in the western fringes of the Flinders Ranges, about 500km North of Adelaide, sits a 60,000 hectare national park known as Nilpena Ediacara National Park.

This area holds some of the oldest fossils on earth, being named one of the most important national parks in Australia.

The trouble with a discovery like fossils, is that it becomes open to the public and researchers and universities come and visit for various studies. With this, comes the risk that someone might like to have one of these irreplaceable fossils on their coffee table.

“What made this project really exciting, was how we could secure the site to make it both accessible for people but also make sure that over time the fossils weren't stolen.” – Jason Irving, Director of National Parks Program, DEW, SA.

Protecting fossils has a similar approach to most Land Watch projects, cover all entrances with number plate recording and the main asset areas. In this case the main assets were scattered across the park, so 360 degree coverage camera stations were rolled out on each and every fossil bed that link back to a main base station.

“We are serious about protecting it and now we have got the systems in place to protect it.” Jason Irving.





NILPENA EDIACARA NATIONAL PARK, SA

07

FULL PROPERTY SOLUTIONS

A

SECOND HOUSE & YARDS

Remote view of the yards and
wifi for connectivity.

B

MACHINERY SHED

Shed mounted cameras for security
over the workshop and machinery as
well as a Wi-Fi access point to provide
internet access whilst in the shed.

C

FUEL

Saved record of vehicle movement
around the fuel storage.

D

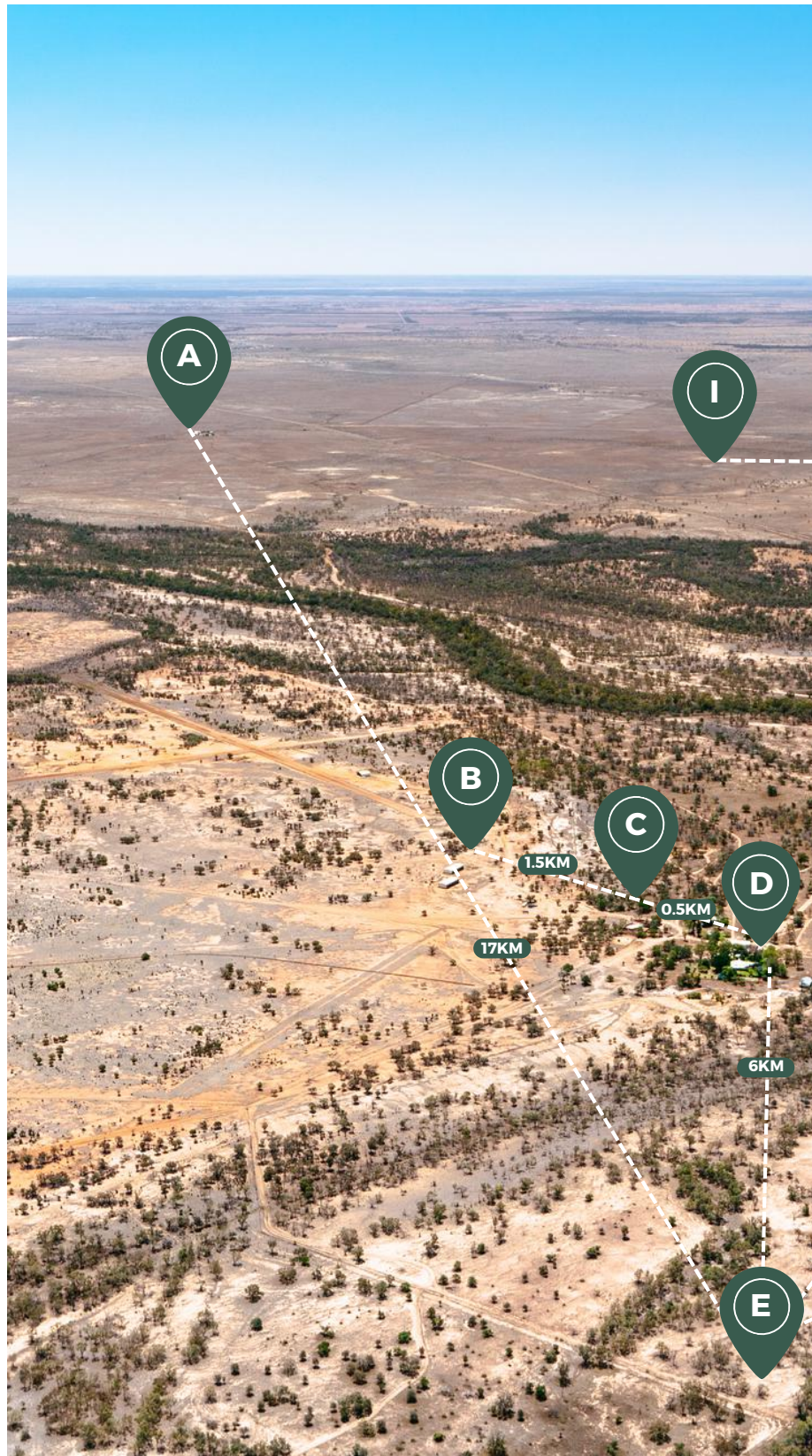
HOMESTEAD

The homestead is usually used as the
base station and includes the recording
unit with hard drive storage, a monitor
and connection to internet if available.
Cameras on the building are cabled to
the recording unit.

E

REPEATER STATION

If line of sight is blocked by timber of
a ridge- line, a repeater station allows
for continued connection for back
paddock systems from the homestead.



Key

----- Land Watch Link



Land Watch System or Repeater Station

Nobody knows your property better than you and nobody knows how to keep an eye on it better than the team at Land Watch! We look forward to working with you as we develop your custom property solution. The example below shows what a Land Watch solution looks like and what features may be implemented. Each location is connected to the homestead via a Land Watch Link.



F

BACK YARDS

A solar powered PTZ camera provides security over the loading ramp as well as checking on stock welfare with 360 degree pan and 400m zoom. Wi-Fi access at the yards for connection to scales and monitoring devices.

G

MAIN ENTRY

Trip line alerts every time a vehicle crosses the grid from a solar powered camera. An ANPR (Automatic Number Plate Recognition) ensures no details are missed.

H

SIDE ENTRY

Solar powered security camera system monitoring side gate.
Trip line detection.

I

TROUGH

Solar powered trough monitoring camera for easy and frequent checking of water levels, leaks and water quality.

LAND WATCH WIRELESS LINKS EXPLAINED



4 kilometer Land Watch Link
with repeater, camera and wifi

A Land Watch Link provides a direct network connection between two points. This means **we can take the internet from where it is and connect it to where it needs to be** – a bit like Wi-Fi but aimed from one point to the next and able to travel 30km before needing a repeater station! That internet may be provided from your router in the house, or from the high point on the property with the best 4G reception. At Land Watch, we have tried and tested the use of this technology in remote harsh outback Australian conditions. From the Flinders Ranges in SA to Far North Queensland and over to WA, Land Watch Links are providing valuable connectivity across properties.

The best method of describing it, we find, is by likening it to an irrigation system. Each link we connect is like a length of poly that allows the network to spread. At each connection point we can then access it. Maybe this is for connecting a camera or maybe it is to provide internet access at the back yards that otherwise has no phone reception.

We can also then connect to a repeater station which allows additional links to continue past obstacles to the next points and so on and so on. What we end up with is a map that looks like the example to the right. Each of the outstations ie. yards, cottage, entry is now connected to the internet.



FEATURES OF WIRELESS LINKS



SECURE RECORDING

Having a direct link from the camera to the recording unit, means that all footage/data is stored off camera and with longer record times.



REMOTE WIFI

A wireless link connection means there can be Wi-Fi access available wherever you need it. For example, at the yards, at the shed etc.



DATA-FREE LIVE STREAM

The camera is directly connected via the Land Watch Link allowing full time, live stream from the camera at the homestead without waiting for load times.



REPEATERS

Repeater stations allow us to continue linking where obstacles (such as hills and trees) may impede on line-of-sight.

09

WHAT A LAND WATCH STATION INCLUDES

POWER OPTIONS



MAINS POWERED
-Optional UPS or backup solar



SOLAR POWERED
-Optional solar and battery upgrade for low sun areas

LINK OPTIONS

				
	SHORT RANGE	MEDIUM RANGE	LONG RANGE	EXTENDED RANGE
Link Range	0-800m	800m-5km	5km-10km	10km +
LW Code	LW - SR	LW - MR	LW - LR	LW - XR
Solar Powered	YES	YES	YES	YES



CAMERA OPTIONS

					
	Water camera	Fixed camera	Thermal camera	PTZ camera	ANPR camera
	6MP	6MP	4MP / 1.3MP	4MP	4MP
Setback from gate	N/A	15m	20m	20m-100m	25m
Infra-red night vision**	NO	YES	YES	YES	YES
Thermal recognition	NO	NO	YES	NO	NO
Detect movement (day)	NO	65m	85m	1km	30m (vehicle)
Detect movement (night)	NO	20m	50m	100m	30m (vehicle)
See who it is (day)	N/A	15m	20m	400m	N/A
See who it is (night)	N/A	10m	15m	80m	N/A
Check a trough	20m	20m	30m	400m	N/A
Number plate	NO	NO	NO	NO	YES
Remote zoom	NO	NO	NO	YES	NO
Remote rotate	NO	NO	NO	YES	NO
Survives in the outback	TESTED	TESTED	TESTED	TESTED	TESTED
Vehicle/human search	NO	YES	YES	YES	VEHICLE ONLY

*The above specifications are the results of on farm testing and may differ to what the camera manufacturer claims due to the difference in testing environments. Every farm is different and these are averages only.

**Infrared night vision appears as black and white.



PTZ camera on a silo platform monitoring water levels nearby.



ANPR camera with 2 x fixed cameras monitoring double gate entry.



Fixed zoom camera on remote yards.

OUTBACK WI-FI

CONNECTIVITY ACROSS VAST LANDSCAPES

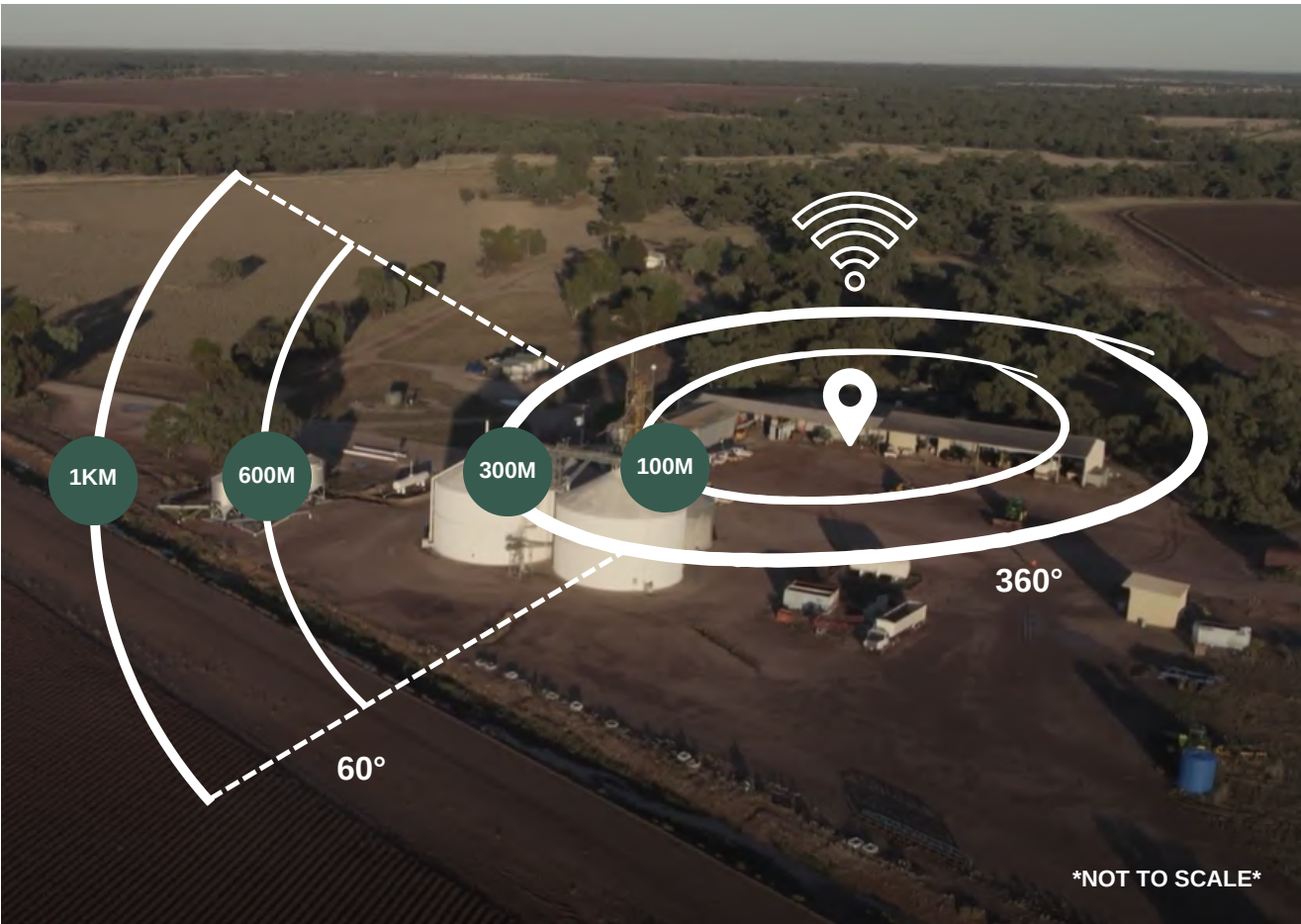
Connectivity is critical!

Most places we come across will have an internet connection at the homestead, with Starlink these days you can have high speed internet nearly anywhere in the country. An internet connection, however, is only as good as the Wi-Fi area it covers which usually doesn't extend much past the front porch.

Land Watch can extend the Wi-Fi coverage to include the shed and yards with up to a 300m radius, or we can go even further, up to 1km, within a narrower 60° coverage area.

The internet is still your original connection from the home, but with the addition of our Land Watch Links we can take it down to the sheds and spread it around or shoot it over to the yards and cover the whole area.

We have put this gear to the test on cattle stations in the NT and cropping properties in the Riverina, so we know it will work on yours.



*BASED ON FIELD TESTS. REAL TRANSMISSION RANGE MAY VARY ACCORDING TO ENVIRONMENT, RECEIVING DEVICE, ETC.

At Land Watch we much prefer to complete the install of your new custom remote camera system on site with you. The tours of the property in the tilly, smoko at the yards and scones on the verandah are the best part of the job. However, we also understand that some of you like to have a crack at the install yourself, and you may only need one or two locations covered at sites that have good reception. For these situations, a 4G unit may suit, which is why we have made the Land Watch self-install range.

This is a short selection of some of the most popular camera systems combined with some clever nicknames to make it easier for you to pick the one that best suits. These easy to install systems are built and tested in our shed at Land Watch HQ before being sent out. Then, your system is packaged up in a timber crate for protection and sent direct to you. Each system includes a full set up and operation guide and we throw in a couple essentials like the tools for install and keyring to finish it off.



SHEDS



YARDS



PADDOCKS



TANKS



FUEL



ENTRIES



TROUGHS



STATION MANAGER



KEY AREAS:



The Land Watch 'Station Manager' is a testament to the Land Watch legacy of 'keeping an eye on what's important'. The system gives farmers a full visual of the most important areas of the property from wherever they are in the world. This little beauty can rotate a full 360 degrees and has an industry leading zoom allowing you to check a trough at 400m away.

Powered by the Land Watch power station and backed by our 3 year warranty and lifetime tech support guarantee. Chuck a 'Station Manager' up on the farm and start monitoring remotely.

LOOKOUT

KEY AREAS:



When security is key in a central area, you can't beat the Land Watch 'Lookout'. Like the name suggests this is the unit you go to when you want eyes on the whole place, the whole time.

The 'Lookout' uses either 2 or 4 cameras to provide full time 180 or 360 degree coverage.

The SMD (Smart Motion Detection) camera technology means we aren't just relying on noticing something missing but can be alerted to any movement including in the night and without the false alarms from animals or the wind in the trees. Powered by the Land Watch power station and backed by our 3 year warranty and lifetime tech support guarantee.

ENTRY GUARD

KEY AREAS:



It's your farm and you should know every time someone comes onto the property uninvited regardless of which access they come in. Solar power from the Land Watch power station combined with state of the art 'smart trip line' technology, means no one is getting in unnoticed.

Even the most remote entry will be covered, with an alert sent to your phone when a vehicle enters. There are no blurry photos here. The Entry Guard records and saves the full time the vehicle is within view, giving you the best chance to get the details you need.

The Entry Guard is best suited when covering a gate or driveway where a vehicle must come to a stop.

*not suitable for grids or open roads.

BORE RUNNER



KEY AREAS:



We know that you want to check on the waters more often, but we also understand that your water monitoring camera doesn't necessarily need to be recording 24/7 like our security range

The Land Watch 'Bore Runner' has been stripped back to only include the essentials, like the Landcruiser 70 series there is no bells and whistles here. Check the water with your morning coffee and get on with your day!

ENTRY GUARD THERMAL



KEY AREAS:



The Entry Guard Thermal is the perfect addition to the Entry Guard when your goal is to catch anybody crossing the grid day and night. Using a thermal recognition camera we are able to cut through the headlights to detect vehicles and provide accurate alerts even at speed.

With two cameras in one, this system provides clear picture quality with the added benefit of thermal detection – so nothing can sneak past.

4G SELF-INSTALL SYSTEMS

ADD-ONS & EXTRA'S

- shed mounting kits – brackets and equipment to allow for installation inside a shed, including solar panel roof mounting brackets
- pivot poles – 4m x 75mm galvanised SHS post with custom pivoting base suitable for concreting in-ground
- 4G Wi-Fi access points – turn any unit into a Wi-Fi hotspot
- antenna upgrade for low reception areas
- solar upgrade for low sun areas including additional panel and upgraded battery
- all units available in 240V

"Our 4G Land Watch system keeps an eye on a trough in a remote part of our property which saves us time and gives us peace of mind."

Scott Walker – West Hill, Blackall, QLD

STARLINK BASE STATION

Solar powered Starlink base station for use in remote locations with minimal to no phone reception or internet coverage.

Stationary system or moveable available as needed.

- Add Wi-Fi access point to create a remote hotspot.
- Add a camera to create remote surveillance or monitoring.
- Can be the base station in a Land Watch Link system providing connectivity to multiple systems across the property.

STARLINK SPECS

- Independent solar power station supporting the Starlink.
- Suitable for standard Starlink plan / Starlink mini or travel plan for a relocatable camera station.
- Lithium battery.
- Solar panel.
- Solar controller.
- Galvanised hardware.



FARMBOT
security

Powered by

LAND WATCH
Australia

We are proud to announce our partnership with leading agtech water monitoring company, Farmbot. At Land Watch we pride ourselves on working with like-minded companies that have similar goals to us in the agtech world, in this case providing farmers with valuable resources to improve their day-to-day.

The solutions offered by Farmbot are designed and built for outback Australian conditions providing up to date data on water levels and usage. Combine this with a live feed from a Land Watch camera system and the massive cattle station starts to feel a little more manageable.

Our partnership with Farmbot means if you are a Farmbot user, you can now access your cameras through the MyFarmbot portal. This gets all the essential info into one place on your device.

Keep an eye on what's important across the whole property with water levels monitored and security covered.

The Farmbot Security powered by Land Watch range incorporates all of your favourite Land Watch options with the ability to view the cameras alongside your existing Farmbot sensors through the portal.





We are passionate about our country's landscape and our client's properties, with this in mind we have partnered with Exci.

Exci is the 'smoke alarm for the bush' and is a dedicated tech company specializing in automated real-time wildfire detection and tracking. Small fires are automatically detected within minutes with a near-zero rate of false positives. With a deep passion for safeguarding communities and the environment, they are committed to revolutionising the process of detecting and responding to wildfires.

Exci chose Land Watch as a key partner in their mission to "continue reducing the time between ignition and detection...". Land Watch's remote camera systems were already built for the conditions in remote Australia, so were a perfect fit as a hardware provider allowing the Exci team to monitor any area susceptible to bushfires. Several recent set ups across Queensland and New South Wales with the Exci program and a Land Watch camera, provide an autonomous fire detection system reducing reliance on manned fire towners.

Keeping in mind our core clients needs, we are excited to be able to offer the Exci system to our large-scale farming clients allowing them to have the same real time fire alerts. We hope that faster and more accurate notifications about bushfires, grass fires or crop fires will be able to reduce the loss of feed, stock or crops during the dry times.

We pride ourselves on working with likeminded companies that share our message and beliefs, 'keeping an eye on what's important' now includes fire.



PROPERTY SOLUTIONS CHECKLIST

To help us serve you effectively, these are some of the possible locations you might like to consider covering with a Land Watch system.

SECURITY CAMERAS

- | | | | |
|--------------------------|-------------------------------------|--------------------------|---------------------------|
| <input type="checkbox"/> | Entry and Exit Access | <input type="checkbox"/> | Yards/Loading Ramp |
| <input type="checkbox"/> | Feed/Silo Surveillance | <input type="checkbox"/> | Homestead |
| <input type="checkbox"/> | Fuel Surveillance | <input type="checkbox"/> | Number Plates Recognition |
| <input type="checkbox"/> | Shed/Farming Equipment Surveillance | | |

FARM MONITORING

- | | | | |
|--------------------------|--------------------------------------|--------------------------|---------------------|
| <input type="checkbox"/> | Trough/Tank | <input type="checkbox"/> | Bushfire Monitoring |
| <input type="checkbox"/> | Stock Control/Management/Stock Yards | <input type="checkbox"/> | Weather Monitoring |
| <input type="checkbox"/> | Feed Levels | | |
| <input type="checkbox"/> | Pest Monitoring | | |

WI-FI

- | | |
|--------------------------|--------------------|
| <input type="checkbox"/> | Internet Spreading |
| <input type="checkbox"/> | New Wi-Fi |

CHECKLIST



14 TESTIMONIALS

"We are very pleased with the Land Watch Australia systems and how they operate. They help our farming enterprise checking water supply and troughs, as well as added security against theft.

I would certainly recommend getting in touch with the team at Land Watch Australia for some great advice and products on your remote camera monitoring needs."

- Kel

Brookelin Pastoral, QLD

"My experience with Land Watch Australia has been overwhelmingly positive. The team's expertise when it comes to security and other technology is extremely thorough and of a high quality.

A team member is always accessible and quick to follow up with any questions or issues you may have. The Land Watch Australia systems have really added a lot of value to our agricultural enterprise. Overall I wouldn't hesitate in recommending Land Watch Australia."

- Alex

Hornet Bank Pastoral Company, QLD

"I do not live on the property full time and wanted to reduce the risk of theft and vandalism while I am away, and to be able to check the whereabouts and welfare of stock when not on the property. The customer service and sales team were very responsive, easy to deal with and able to adjust our proposal to accommodate our needs and budget.

The installation went very smoothly with great communication from staff. We now have increased security for the house and sheds, and are better able to monitor animal welfare and be alerted to any issues that arise."

- Justin

Kyogle, NSW

CONTACT US

Please reach out whenever you want to chat or have questions! We love hearing about your properties and discovering ways in which we might be able to help. We are easily accessible on Instagram or Facebook, via email or the website and we're more than happy to have a chat over the phone.



1800 308 270



www.landwatchaustralia.com.au



info@lwa.com.au

FOLLOW US



@landwatchaustralia

